

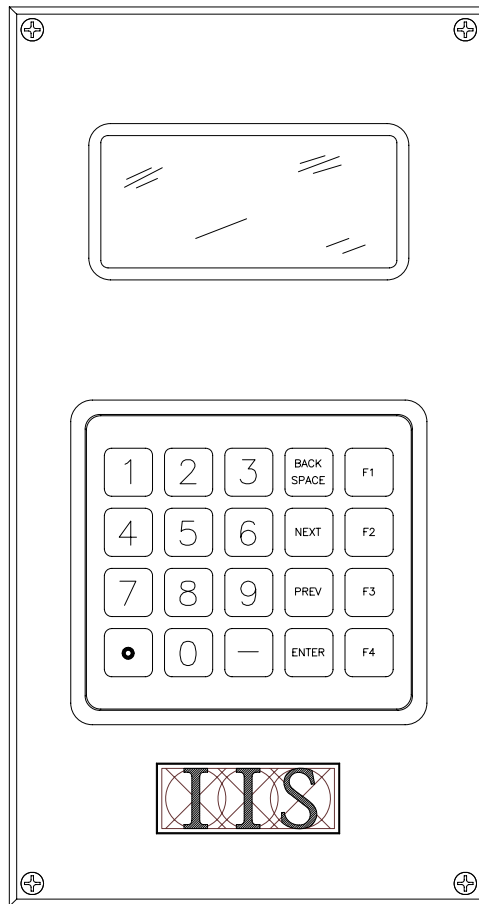
# OPI-100 OPERATOR INTERFACE UNIT (RS232) INSTRUCTION BOOK

INDUSTRIAL INDEXING SYSTEMS, Inc.

Revision - 0

Approved By:

## Introduction and Summary of Features



- Full function key menu selection.
- Full numeric data entry editing.
- Custom user menu configurations possible with the development system software.
- Industrial panel mount.
- 5 volt DC power input supplied by the MM-5, no external power supply is needed.
- Remote operations up to 25 feet.
- LCD-backlight display for easy viewing.

## OPI-100 Specifications

### Note

All voltages are with respect to the ground line, and all temperatures are in degrees Celsius ( $^{\circ}\text{C}$ ).

Supply voltage	4.7 to 5.3V DC (60mA) (supplied by MM-5)
Operating temperature range	-40 $^{\circ}\text{C}$ to 80 $^{\circ}\text{C}$
Operating temperature range for keypad and electronics	-40 $^{\circ}\text{C}$ to 80 $^{\circ}\text{C}$
Operating temperature range for LCD display	-10 $^{\circ}\text{C}$ to 70 $^{\circ}\text{C}$
Non-condensing humidity range (storage and operating)	0% to 98%

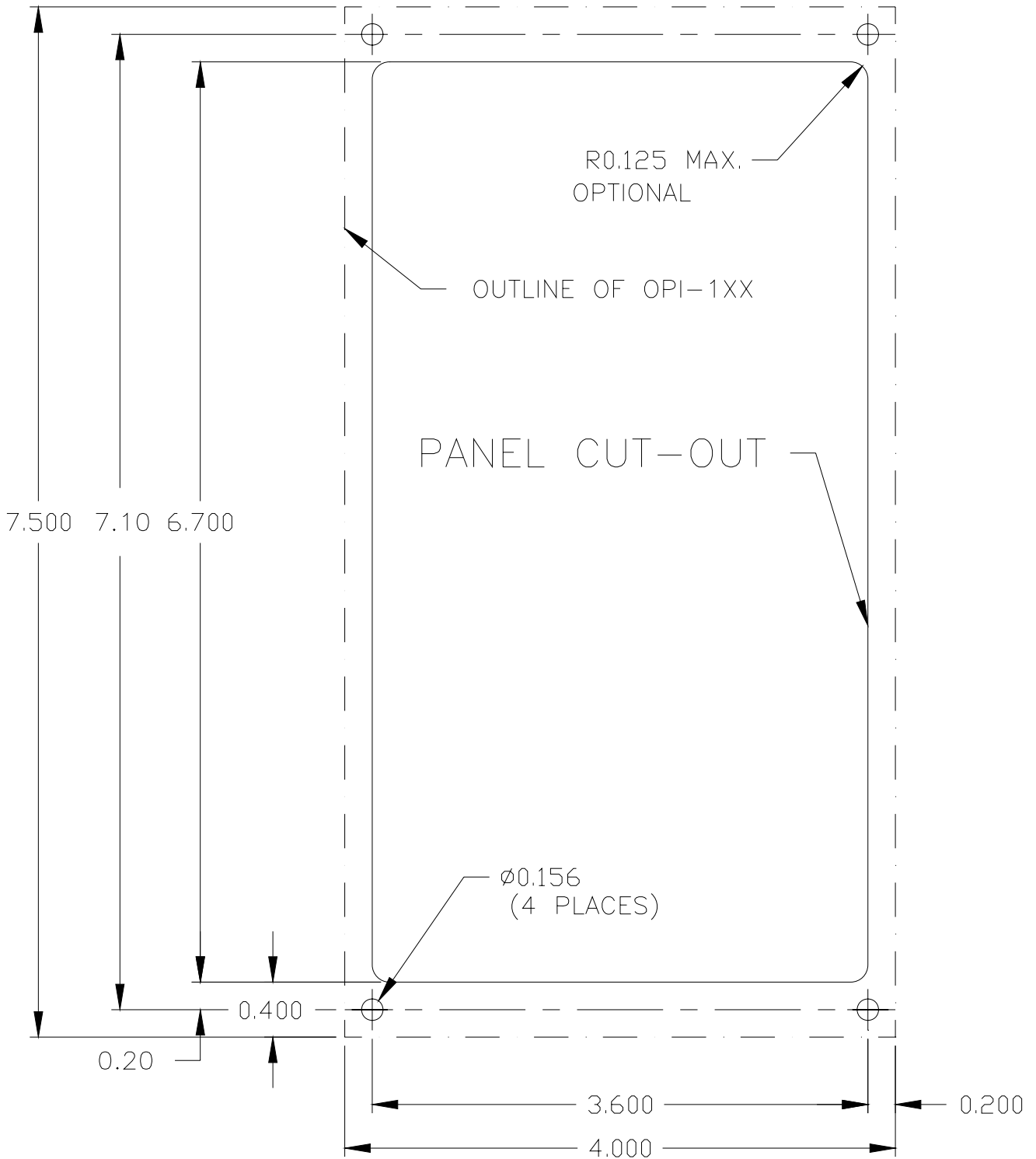


Figure 2 - OPI Panel Cutout

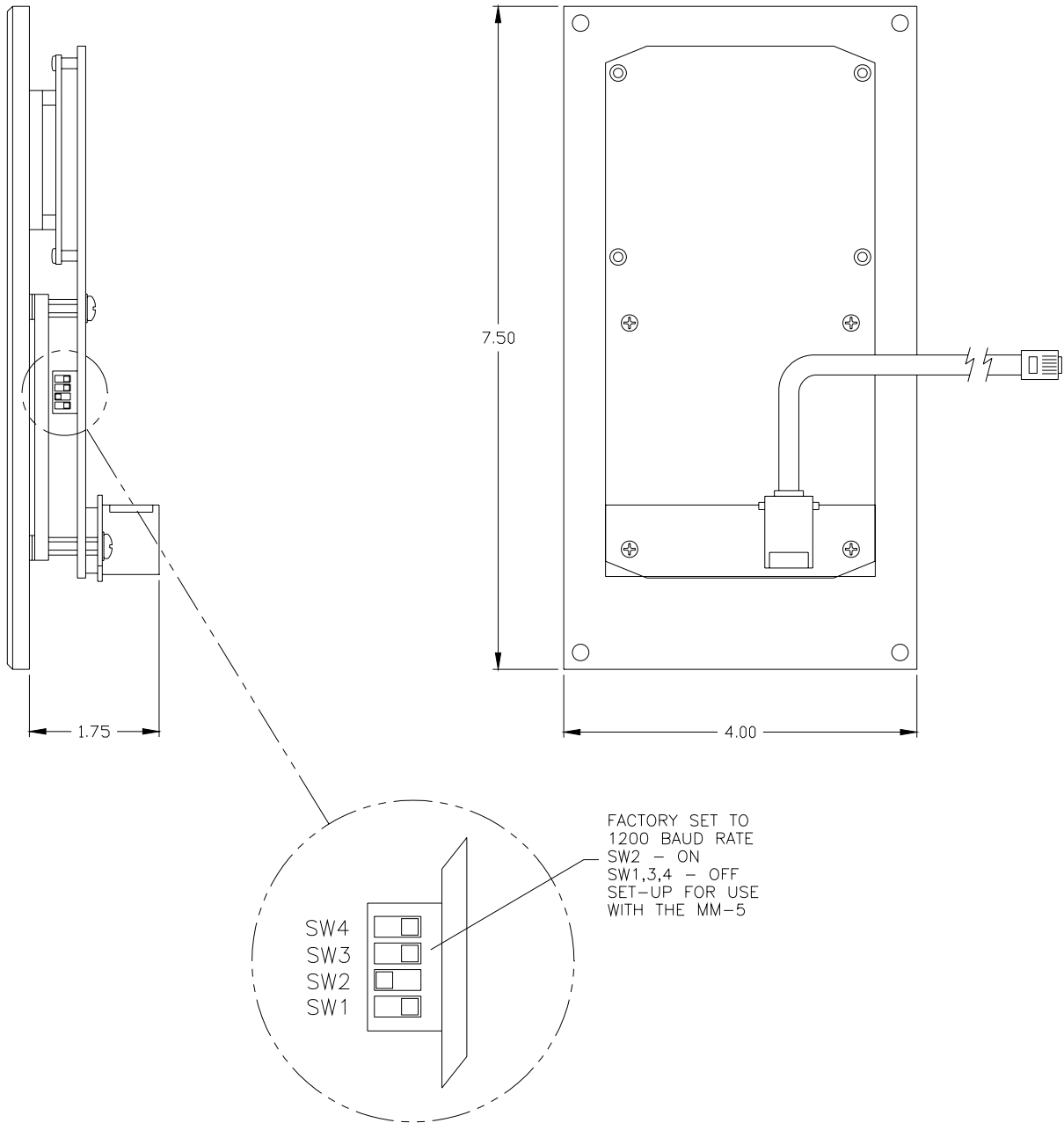
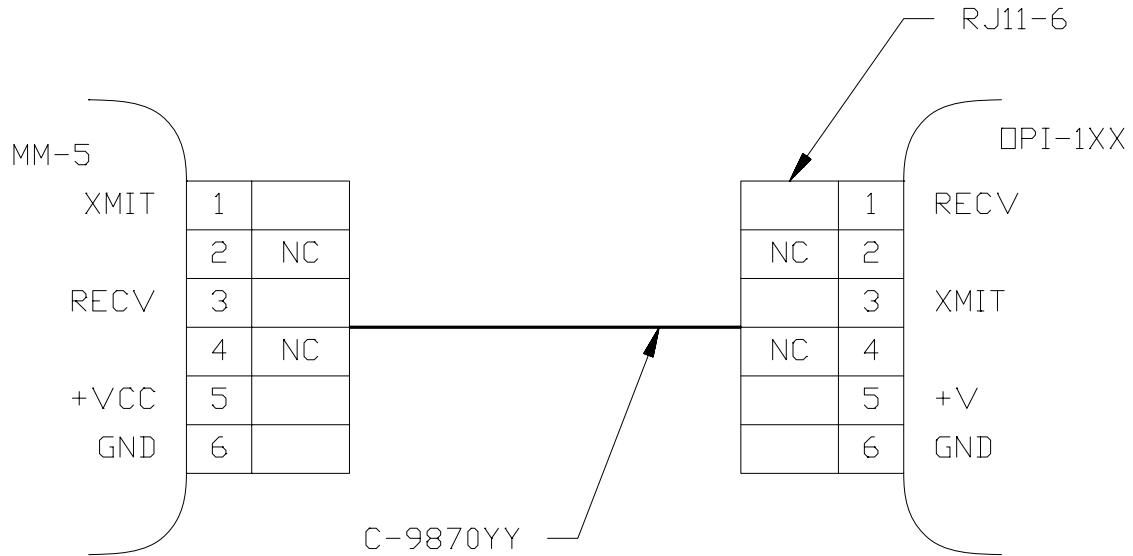


Figure 3 - Layout of OPI Assembly

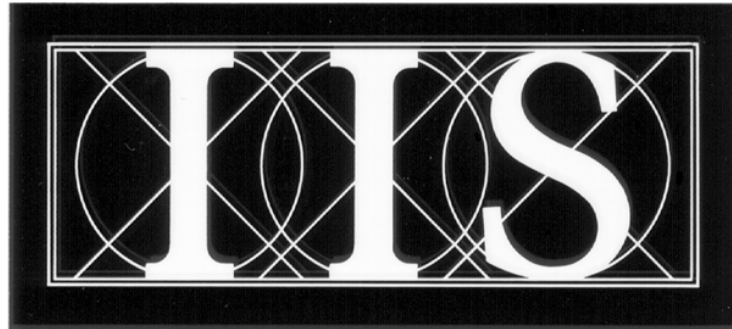


**Figure 4 - Connector Details of cable C-9870YY**

**Note:**

YY, which makes up two of the places of the cable part number, represents the length of the cable in feet, with a maximum distance of 25 feet.  
 [Standard Lengths are 7 feet & 25 feet].

IB-11B015



**INDUSTRIAL  
INDEXING SYSTEMS  
INC.**

**626 FISHERS RUN  
VICTOR, NEW YORK 14564**

**(585) 924-9181  
FAX: (585) 924-2169**

PRINTED IN USA  
© 1992