

FEATURED PRODUCT

Electro-Mechanical Retrofit



Electric Drive Conversion for the Nissei Hydraulic ASB Blow Molding Indexing Table

*Electric Indexing
Servomotor*

SMP Gearbox

*SMP Adapter
KIT-ADT-43*

*Rotation Collar
Coupling*



45"

*Electric Servo Upgrades for
220 and 440 VAC systems are
also available*

Overview

The IIS electromechanical indexing system, designed to replace the hydraulic indexing drive, provides improved cycle times and a reduction in the hydraulic maintenance of the Nissei ASB Blow Molding indexing table. Power is supplied by a high performance AC servomotor and heavy duty gearbox to ensure the proper torque and speed is provided to complete a high cycle index time.

Call us today at (585) 924-9181 to discuss this retrofit in greater detail

626 Fishers Run, Victor, NY. 14564 ~ info@iis-servo.com ~ www.iis-servo.com

Industrial Indexing Systems developed a special conversion adapter for the gearbox, the KIT-ADT-43 (**Figure 1**), to provide a bolt-in replacement for the HR-20S type hydraulic motor.

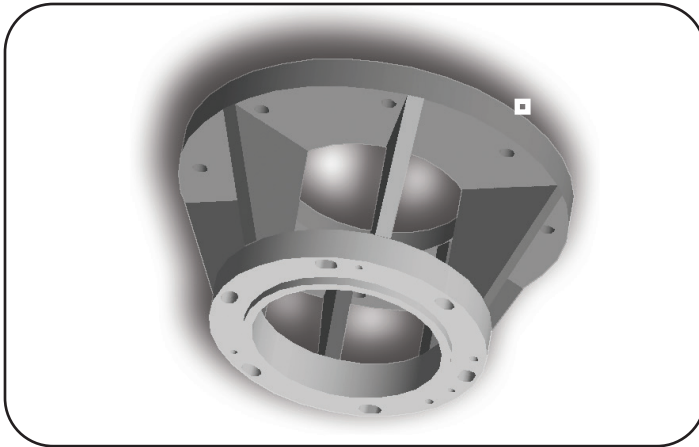


Figure 1

KIT-ADT-43 Motor adaptor assembly designed to fit the ASB-650 table that uses the HR-20S type hydraulic motor

Cycle Time Improvement

Faster index completion time and an improved PLC scan time can reduce the index cycle time for the 90° move on the table to 1.3 seconds with a standard precision assembly or 0.99 seconds with a reduced backlash assembly. See **Figure 2** to observe an actual speed profile of an ASB-650 index table's cycle using a standard precision assembly.

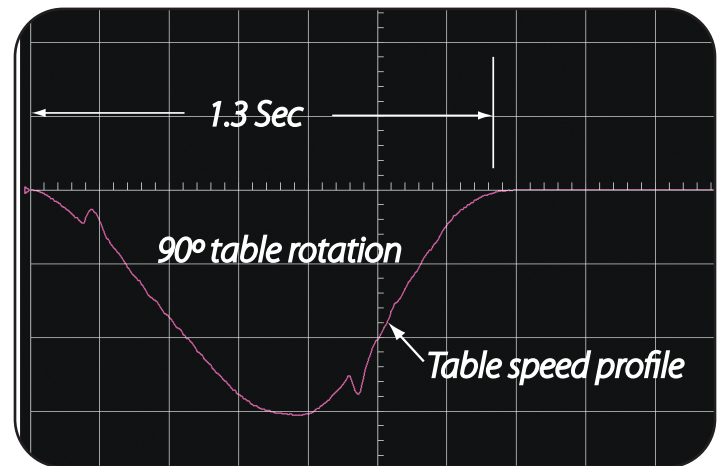


Figure 2

Chart of actual speed profile and cycle time of the IIS electric indexing system for the ASB-650 blowing molding table

Simple Adjustments

Using a touchscreen interface mounted on the enclosure, the indexing table's acceleration and speeds can be adjusted on-the-fly for optimum performance.

Conversion Process

The ASB-650 table modifications consist of removing the hydraulic motor and the rotation arm from the table assembly and installing the rotational collar coupling, available from Nissei. The motor/gearbox/adaptor assembly and electrical enclosure are then installed.

Install, Setup, and Support

IIS can be contracted to provide a technician to install the wiring from the IIS enclosure to the servomotor and to assist in integrating the IIS indexing system into PLC

logic and controls. PLC programming is required for this retrofit and IIS can recommend a third party who is expert in the operation of the ASB machines.

Other Programs

Electric Servo Upgrade kits for other obsolete electric and hydraulic motor based index tables are also available from IIS including:

- ASB-650, 220 and 440 VAC
- ASB-16, 220 and 440 VAC
- ASB-70, 220 and 440 VAC

Call us today at (585) 924-9181 to discuss this retrokit in greater detail

626 Fishers Run, Victor, NY. 14564 ~ info@iis-servo.com ~ www.iis-servo.com

Electro-Mechanical Retrofit



Mechanical Specifications:

- ☐ Motor/Gear/Adaptor assembly: 300 Kg (660 lbs)
- ☐ Collar coupling: JIS D2001-1059
- ☐ Output Torque: 5200 Nm peak
3220 Nm rated
- ☐ SMP Gear ratio: 71:1
- ☐ Standard motor cable lengths: 10 meters
- ☐ Index time with standard assembly 1.3 Seconds
- ☐ Index time with low backlash assembly 0.99 seconds

Electrical Specifications

- ☐ Enclosure size: 30x24x14in
(760x600x350mm)
- ☐ Current requirements: In-rush - 50 amps
Rated - 50 amps
- ☐ Input voltage tolerances: 420Vac - 460Vac
- ☐ An external contactor is installed in the machine's main control panel and wired into the safety circuit.

Note: The rotation collar and pins are not part of the IIS kit and are ordered separately from Nissei.



EN-667001 Enclosure



Blow Molded Bottles



Inside View of the Enclosure

Call us today at (585) 924-9181 to discuss this retrokit in greater detail

626 Fishers Run, Victor, NY. 14564 ~ info@iis-servo.com ~ www.iis-servo.com

INDUSTRIAL INDEXING SYSTEMS, INC

626 Fishers Run, Victor, NY. 14564 ~ (585) 924-9181

info@iis-servo.com ~ www.iis-servo.com



The IIS Team



Discover how our advanced motion control components and superior support can redefine your operations. Let's embark on a journey to operational excellence. Ready to elevate the efficiency, consistency, and repeatability in your operations? Call us today at (585)924-9181 to discuss your application.

Headquarters in Victor NY



Our location houses all critical departments: Applications Engineering, R&D, Production, Warehouse, Panel Shop, Quality Control, Sales, Marketing, and Customer Support. Having everything under one roof speeds communications and provides better service to our customers.

Check out our IIS InMotion Blog for the Servo Motion Control Professional ~ <https://www.iis-servo.com/blog/>



If you're interested in becoming a **Sales Representative** for Industrial Indexing Systems, where you'll play a crucial role in boosting brand recognition and nurturing client connections, contact our offices: (585) 924-9181 ~ Email: sales@iis-servo.com

EtherCAT



DeviceNet
ODVA

SERCOS
the automation bus



Copyright Clause: All materials are copyrighted. Users can NOT make changes to digital files, rewrite articles or use our materials without proper permission. Emerald, Emerald Automation Controllers, Emerald Servo Drives, Emerald Series, EMC-2005, Emerald Motion language, EML, Emerald Development Environment, EDE, EMax Positioner Drive, Luminary Motion Control, Luminary Servo Drives, Luminary Stepper Motor and Drives, and Luminary Series. DeviceNet is a trademark of the Open DeviceNet Vendors Association. SERCOS is a trademark of SERCOS N.A. Windows is a trademark of Microsoft Corporation. CC-Line is a trademark of CC-Link Partner Association. Ethernet is a trade mark of XEROX. Velconic and Toshiba are trademarks of Shibaura Machine. This data is subject to change without notice. © Copyright Industrial Indexing Systems, Inc, 2021